

Team Name:

Club:

WHITE ROSE QUIZ 2023

Donation of £2 in aid of Cancer Research

To be handed in to Enquiries/Registration before 12.00 on Sunday 27th August

Winners to be announced at the White Rose Prizegiving

Prizes for top three

Quizmaster's wife's decision is final!

In this alphabetical quiz, we'll take you around the world. Fill in the missing countries from the clues provided.

- | | | |
|-----|--|------------------|
| 1) | Its flag bears a red maple leaf: | CANADA |
| 2) | The most easterly Caribbean island: | BARBADOS |
| 3) | North African Country, also a type of leather: | MOROCCO |
| 4) | and Tobago: | TRINIDAD |
| 5) | In South America, home of the Angel Falls: | VENEZUELA |
| 6) | Its capital city is Helsinki: | FINLAND |
| 7) | Handed back to China in 1997: | HONG KONG |
| 8) | If peckish, eat goulash here: | HUNGARY |
| 9) | Country with over 1 billion people: | INDIA |
| 10) | River in which Jesus was baptised: | JORDAN |
| 11) | Important coffee producer: | KENYA |
| 12) | Territory subject to a 1982 war: | FALKLAND ISLANDS |
| 13) | Current name for Burma: | MYANMAR |
| 14) | Holland is also called: "The | NETHERLANDS |
| 15) | Formula 1 cars race through the streets: | MONACO |
| 16) | Islands north east from Malaysia: | PHILIPPINES |
| 17) | Has large oil deposits: | IRAQ |
| 18) | Where Paddington Bear comes from: | PERU |
| 19) | Spans 11 time zones: | RUSSIA |
| 20) | Eaten at Christmas or Thanksgiving: | TURKEY |
| 21) | The first World Cup was held here: | URUGUAY |
| 22) | The musical "Miss Saigon" begins here: | VIETNAM |
| 23) | Capital is Cardiff: | WALES |
| 24) | Where tacos and nachos come from: | MEXICO |
| 25) | Now lira can't buy you anything here: | ITALY |
| 26) | Nut that's hard to crack: | BRAZIL |

The two-letter symbols are connected in groups of four

CO	FE	MU	DO
HE	NU	MA	NA
ME	FA	PI	TI
XI	NI	LA	PA

- 27) FE HE NA NI

Connection: Iron, Helium, Sodium, Nickel (Chemical elements)
- 28) MU NU PI XI

Connection: Greek letters
- 29) DO FA LA TI

Connection: Musical Notes
- 30) CO MA ME PA

Connection: Colorado, Massachusetts, Maine, Pennsylvania

Cryptic Pop Groups/Singers

- 31) No heating at the Globe

COLDPLAY
- 32) Raincoats in the cemetery

MAX BYGRAVES
- 33) Mary, Victoria, Elizabeth

QUEEN
- 34) Nookie Guns

SEX PISTOLS
- 35) Stone Wall Cinque

JACKSON FIVE
- 36) A right mess

DIRE STRAITS
- 37) Bird gets a draught

HAWKWIND
- 38) Distribute evenly

CHER
- 39) The Bravo Golfs

BEE GEES
- 40) German with coronary regulators

GERRY & THE PACEMAKERS
- 41) Treacherous vicar

JUDAS PRIEST
- 42) “Correct” commented Trueman

RIGHT SAID FRED
- 43) Prosperous city vermin

BOOMTOWN RATS
- 44) Thrice drippy

WET WET WET
- 45) Siblings of the Bard

SHAKESPEARE’S SISTER

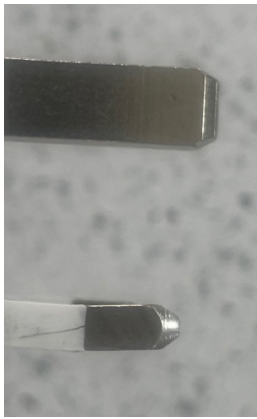
Dingbats Find the word or phrase : e.g. (HOROBOD = Robin Hood)

46	BOMFED <i>Bowled Over</i>	51	X I ST N G <i>10 Downing Street</i>
47	ETUNIMANI <i>Back in a Minute</i>	52	KNEE LAMP TORCH FLASH <i>Neon Lights</i>
48	C O D LO H L MON <i>Fish out of Water</i>	53	4 1 2 3 5 6 7 8 9 10 <i>For Hire</i>
49	1 3 5 7 9 11 Favourite <i>Odds on Favourite</i>	54	001 <i>Turn of the Century</i>
50	O O <i>Au Pair</i>	55	TWOTOO <i>Put two and two together</i>

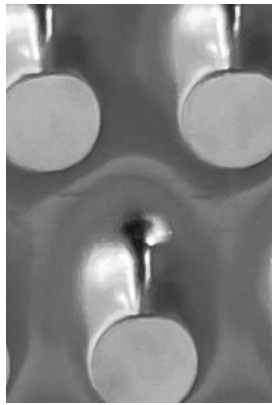
Synanagrams – Rearrange the letters of each of the following words to create another word which has more or less the same meaning (No. 10 makes 3 words)

- | | | |
|-----|-----------------|-----------------|
| 56) | EVIL | VILE |
| 57) | LAUDATION | ADULATION |
| 58) | TESTAMENT | STATEMENT |
| 59) | ENRAGED | ANGERED |
| 60) | NOTE | TONE |
| 61) | PATERNAL | PARENTAL |
| 62) | DEDUCTIONS | DISCOUNTED |
| 63) | PAT | TAP |
| 64) | CLEANERS | CLEANSER |
| 65) | TWELVE PLUS ONE | ELEVEN PLUS TWO |

Picture Quiz. Identify the items in the close-ups.



66) THREE PIN PLUG



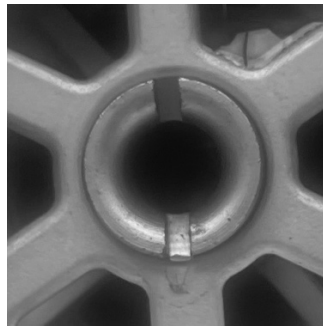
67) GRATER



68) BOTTLE TOP



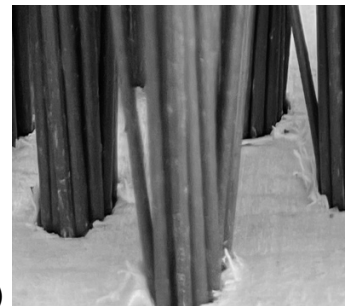
69) TIN CAN



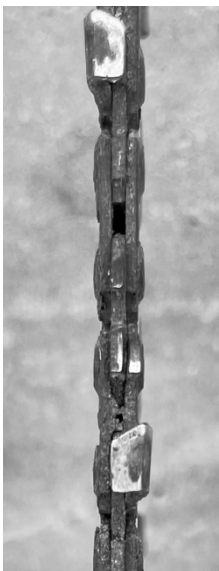
70) SINK DRAIN HOLE



71) GARDEN HAND FORK



72) BRUSH



73) CHAIN SAW CHAIN



74) GARDEN TAP



75) PIANO KEYS

Tie Breaker

How long is the piece of string in the jar at Enquiries?

4.42m or 14' 6"

